



porcherindustries®

MAKING THE

INVISIBLE ESSENTIAL



# Building Selector Guide

# WELCOME TO A NEW WORLD

# OF MATERIALS

€285 Mn  
2021 REVENUE

1650  
EMPLOYEES WORLDWIDE

12  
INDUSTRIAL SITES

2  
R&D CENTERS

WORLDWIDE PRESENCE

## COALESCENCE, FOR A SAFER AND SUSTAINABLE WORLD

A powerful combination of chemistry and textiles for a safer and more sustainable world. Porcher Industries designs and manufactures technical materials that can be found

everywhere, making the invisible essential and our every day life safer.

## DIVERSE MARKETS WITH HIGH REQUIREMENTS

Porcher Industries designs and manufactures technical materials allowing cutting-edge companies in the fields of aerospace and defense, automotive, building, industry, energy and sport to anticipate technological and functional evolutions regarding the most complex textile, technical and composite materials.



## WORLDWIDE PRESENCE

A local service wherever you are in the world. Porcher Industries' extensive network of 14 industrial sites, 2 R&D centers and many sales locations spread across 3 continents, places us close to all of our customers, guaranteeing a rapid local response and superior customer service.





## QUALITY IS IN OUR DNA



Porcher Industries makes the quality of its products an absolute priority in the company. Offering to the customer the product he needs to ensure the smooth running of his process is the commitment of everyone. Our teams (production, methods, quality) work hard to maintain this level of commitment.

## SERVICES



Porcher Industries assumes a leadership position in the technical reinforcements market, thanks to flexibility in production and close cooperation between our technical teams and those of our clients.

## DEDICATED SOLUTIONS



Our technicians and engineers are dedicated to the continuous development of new products and new solutions. They strive to find sustainable responses to specific requirements with the knowledge of the products and of the customer processes.

## MAKING THE WORLD MORE RESPONSIBLE



Porcher industries places sustainability at the heart of its development. Committed to an eco-responsibility approach, Porcher Industries anticipates the application of European regulations and is engaged in a process of reevaluation of its products.



## EMBRACING THE IMPOSSIBLE

Is your project different ? Our abilities are infinite.  
For more information about our tailored-made solutions, contact us !

## A SELECTION OF THE BEST MATERIALS

Porcher Industries uses the best and most appropriate materials for the manufacture of its products. This is the guarantee for respecting requirements from our customers.



**E-GLASS** : standard quality of fiber glass with full range from 5 to 9 microns filament and 2,8 to 272 tex count range. These yarns offer a good tensile strength and a low modulus of elasticity.



**S-GLASS** : due to the high inherent tensile and compressive strengths of the fiber, S Glass fibers offer outstanding structural performance, protection against fire, smoke and toxicity.



**PET** : Polyethylene terephthalate (Polyester). 2 types of PET yarns are converted :

**HT (High Tenacity) grade** : when low elongation, tear and temperature resistance , textile strength are required.

This is the main case in our range.

**«Textile» grade** : when HT properties are not required, then «Textile» grade are used.



**CARBON YARNS** : carbon is a high strength and high modulus fiber capable of withstanding temperatures of 1500°C without substantial loss of fiber properties.



**ARAMID** : aramid fibers are a class of synthetic fibers with excellent thermal and dimensional stability. Lighter in weight than E-Glass with higher specific strengths. Mainly used for protective clothing, mechanical rubber goods reinforcement.

**PVA** or Polyvinyl Alcohol is a water-soluble synthetic polymer that brings High tenacity, Low-elongation, High modulus, Low creep and Heat resistance.



**THERMOPLASTIC RANGE** : Porcher industries has developed a range of composites based on Glass or Carbon, as reinforcements and Thermoplastic matrixes.

**In the range** : PEEK ( Polyether Ether Ketone), PPS (PolyPhenylene Sulfide), PA (Polyamide) , PC (Polycarbonate), TPU (Thermoplastic Polyurethane). Each of these has specific characteristics.

# SUMMARY

Presentation of Porcher industries	p. 2
Our range of materials	p. 4
<b>Applications :</b>	
- <b>Acoustical insulation</b>	p. 6
Wall & Ceiling	p. 7
HVAC	p. 7
- <b>Adhesives</b>	p. 8
One-sided adhesives	p. 9
Double-sided adhesives	p. 9
- <b>Floor &amp; Wall covering</b>	p. 10
PVC flooring	p. 10
Carpet tiles	p. 11
Mosaic & Marble	p. 11
Sport fields	p. 11
Ceiling	p. 11
- <b>Primary Structural Materials Reinforcement (PSMR)</b>	p. 12
Tunnel subsoil structure / Airduct for mines	p. 13
Structure reinforcement / Repairing	p. 13
- <b>Safety &amp; Security</b>	p. 14
Fire Protection	p. 15
Ballistic	p. 15
- <b>Solar Protection</b>	p. 16
Sun screens	p. 17
Awnings and blinds	p. 17
Canvas / Tarpaulins / Covers	p. 17
- <b>Thermal insulation</b>	p. 18
HVAC	p. 18
Navy	p. 19
Paper and aluminium insulation reinforcement	p. 19
Wall panels	p. 19
- <b>Waterproofing membranes</b>	p. 20
Roofing	p. 21
Swimming pool	p. 21
Drains & baseboards	p. 21



# ACOUSTICAL INSULATION

## PERFORMANCE AND AESTHETICS

Porcher industries glass fabrics are used as a facing for mineral glass or rockwool insulation in order to provide additional functionalities and specific properties according to the end use.

Glass fabrics participate to the sound lowering thanks to their controlled air porosity.

## WALL & CEILING COVERINGS

For communal areas in large public buildings such as schools, offices or sporting arenas, our range of patterned and coloured glass fabrics offer technical properties like puncture and fire resistance to the acoustical insulation as well as enhancing the aesthetic beauty of the space.

Additional functional properties such as fungi resistance or hydrophobic treatment can be added to the glass fabric; even a hot-melt glue coating that allows end users to apply the fabric directly to the selected thermal insulation material with heat and pressure.

## FIRE PROTECTION

Glass materials contribute to the maximum fire protection.

Main of our products are classified IMO (International Maritime Organization) and A2S1D0.

## FINISHES

Porcher Industries proposes a large range of finishes according to the end use :

- Fungal & chemical resistance

- Water repellent

- Anti bacterial

- ...



## ADVANTAGES

- Air porosity controlled**

- Sound absorption**

- Fire protection**

- Aesthetic aspect**

## Fabrics

Weight (g/sqm)	Std width (mm)	Weave	Construction	Warp	Weft	Finish	Style
97	1448	Plain	21,3x19,7	EC5 11 tex 1/2	EC5 11 tex 1/2	000	119
97	1524	Plain	15,7x13,0	EC6 34 tex	EC6 34 tex	000	1675
143	1219/1524	Plain	7,1x6,3	EC9 34 tex	Y255 tex textured	318	1963
163	1473/1575	Plain	11,8x11,8	EC9 68 tex	EC9 68 tex	000	7660
184	1422/1575	Plain	17,3x9,4	EC9 68 tex	EC9 68 tex	000	7624
214	1250	Plain	17,4x11,8	EC9 68 tex	EC9 68 tex	174	7628
223	1230	Fancy	18,8x12,0	EC9 68 tex	EC9 68 tex	396	3494
223	1230	Fancy	18,8x12,0	EC9 68 tex	EC9 68 tex	397	3494
302	1330/1524	8HS	22,4x21,3	EC9 68 tex	EC9 68 tex	000	7781
326	1230	Fancy	12,0x10,0	EC9 136 tex	EC9 136 tex	279	4651
401	1270	Plain	6,3x6,9	EC9 272 tex	EC9 272 tex	170	13530

## Finish

000

## Color

/

## Description

Greige fabric

131

Grey

Acrylate, weavelock, water resistant

170

White

EVA, water Resistant

174

/

Vinyl chloride, weavelock, fire retardant

279

/

Acrylic, weavelock, fire retardant

318

/

Low toxic, low smoking, high reflective

396

Black

EVA weavelock, water Resistant

397

White

EVA weavelock, water resistant

# ADHESIVES

## AN IDEAL SUPPORT FOR YOUR ADHESIVE TAPES

Porcher Industries supports specific adhesive solutions across Building market.

### ONE-SIDED ADHESIVES

For high-performance applications, we offer a wide range of thin and tightly woven glass fabrics providing lightweight textile supports which are flexible, stable and easy to cut into tapes without fraying.

### DOUBLE-SIDED ADHESIVES

Our range of light and thin scrims allows to serve the requirements of different applications: wall panels, windows, pipes, carpets, roofing and ventilation.

### GREC® SCRIMS: REDUCED THICKNESS

Porcher Industries offers GREC® scrims with tightly controlled thickness. These products allow customers to minimize costs by reducing the adhesive weight applied, adding more adhesive tape to the same diameter of rolls while providing ensuring the required dimensional stability. As bonding chemistry has developed, technical adhesives and tapes became a very competitive assembly method compared to welding or mechanical processes, especially when the adhesive mass support contributes to the overall performance.



## ADVANTAGES

**Increased productivity**  
**Improved flexibility**  
**Heat resistance**



## ONE-SIDED ADHESIVES

### Fabrics

Weight (g/sqm)	Std width (mm)	Weave	Construction	Warp	Weft	Finish	Style
107	1370	Plain	23,6x22,9	EC5 11x2 tex	EC7 22 tex	000	3698
107	1070/1270	Plain	23,6x22,9	EC7 22 tex	EC7 22 tex	000	2116
121	1320	Plain	48x19,2	EC5 11 tex	EC9 34 tex	000	3675
125	1320	Plain	48x19,2	EC5 11 tex	EC9 34 tex	714	3675
127	1220	Plain	48x20,7	EC5 11 tex	EC9 34 tex	000	965
140	1180	Plain	6,9x5	EC9 68 tex	EC9 68 tex	A80	14764

ADHESIVES

## DOUBLE-SIDED ADHESIVES

### Square scrims

Weight (g/sqm)	Std width (mm)	Construction	Warp	Weft	Binder	Style
3,9	1020/1220	3x1	PET 76 dtex	PET 80 dtex	PVAC/PVOH	D4138S010
6,2	1030/1530	4x2,1	PET 76 dtex	PET 80 dtex	PVAC/PVOH	D3942S010
6,4	1025	3x2	PET 76 dtex	PET 80 dtex	EVA	D4124S018
13,2	1600	3x3	PET 76 dtex	PET 280 dtex	PVOH	D4227S002
17,1	1025	8x2	PET 76 dtex	PET 80 dtex	PVC	D3945S072
34	1025	7x3	EC9 34 tex	EC5 11 tex	EVA	D3703S018
53,6	1025	7x3	EC9 34 tex	EC5 11 tex	EVA	D3742S018*

### Square reduced thickness scrims (GREC®)

Weight (g/sqm)	Std width (mm)	Construction	Warp	Weft	Binder	Style
4,9	1020/1555	3,3x1	PET 76 dtex	PET 80 dtex	EVA	D4152C018
5,6	1030	4x1	PET 76 dtex	PET 80 dtex	EVA	D3949C018
6,6	1350	3x3	PET 76 dtex	PET 80 dtex	EVA	M3943C018
27,3	1025/1320	6x2	EC9 34 tex	EC5 11 tex	PVAC	D4151C058

\* Laminated with PET film 17g/sqm

### Diagonal scrims

Weight (g/sqm)	Std width (mm)	Construction	Warp	Weft	Binder	Style
3,6	1060/1590	3x(0,4x2)	PET 76 dtex	PET 80 dtex	PVOH	D4102S002**
4,1	1030/1630	3x(0,3x2)	PET 76 dtex	PET 80 dtex	PVAC	D4340S036**

\*\* Also available in other colors

#### Finish

000  
714  
A80

#### Color

/  
Black  
/

#### Description

Greige fabric  
Acrylic  
Aluminium foil



## FLOOR AND WALL COVERING

PORCHER INDUSTRIES PRODUCTS FOR THE FLOORING SECTOR ARE THE ULTIMATE BENCHMARK IN TERMS OF DURABILITY, PRODUCTIVITY AND COMFORT.

We propose a wide range of reinforcements for floor covering market, whether it be for internal or external applications such as PVC and soft coverings or sport fields.

Our solutions increase our customers potential for differentiation of their offer in terms of quality and longevity in public buildings: airports, hospitals, sport halls, public transport or offices. These surfaces require coatings able to withstand extremely heavy wear, intensive maintenance and the rigors of professional installation.

For PVC flooring, scrims and laminates ensure reliability in the manufacturing process and provide dimensional stability to the finished product.

Porcher Industries GREC® system reduces reinforcement thickness by up to 40% while guaranteeing the mechanical performance.



### ADVANTAGES

Dimensional stability  
Thinner products with GREC® system  
Increased productivity  
Drapability  
Improved flexibility  
Heat resistance

## PVC FLOORING

### Square scrims

Weight (g/sqm)	Std width (mm)	Construction	Warp	Weft	Binder	Style
30	2200	2X2	EC9 33 tex	EC9 33 tex	PVC	10GI018
43,3	1500	3x3	EC9 34 tex	EC9 34 tex	PVC	D3008S027
50	2100	3x3	EC9 68 tex	EC9 68 tex	EVA Conductive	D3280S068
51,4	2100	3x3	EC9 68 tex	EC9 68 tex	EVA	D3280S018*
56,6	2160	5x3	EC9 34 tex	EC9 34 tex	PVC	D3312S027**
137,2	1600	5x3	EC9 68 tex	EC9 136 tex	PVC	D4084S027
145	2100	3x3	EC9 136 tex	EC9 136 tex	PVC	D4334S027

\*Also available in PVC, SBR + COPO AC, PVAC

\*\*Also available in PVAC

### Laminates based on square reduced thickness scrims (GREC®)

Weight (g/sqm)	Std width (mm)	Construction	Warp	Weft	Laminated with	Binder	Style
48,2	2070	4x1,5	EC9 34 tex	EC9 34 tex	PET NW 25g	EVA	D4157C018
52,6	2070	4x3	EC9 34 tex	EC9 34 tex	PET NW 20g	PVAC/EVA	D4080C047
54,8	1600	2,5x1,5	EC9 68 tex	EC9 68 tex	PET NW 20g	PVAC	D4137C061
56.6	1570	5x3	EC9 34 tex	EC9 34 tex	PET NW 20g	PVAC	D3394C061

## CARPET TILES

### Square scrims

Weight (g/sqm)	Std width (mm)	Construction	Warp	Weft	Binder	Style
11,6	1030	0,8X0,8	EC9 34x2 tex	EC9 34 tex	PVAC	M1204SF5H
15	1030	2x2	EC9 34 tex	EC9 34 tex	PVOH	M1215S002
29,5	2040/2060	2x1,5	EC9 34 tex	EC9 34 tex	PVC	M4107SF15
41,6	2015	4x1	EC9 68 tex	EC9 68 tex	SBR/COPO AC	M4330S059

## MOSAIC & MARBLE

### Square scrims

Weight (g/sqm)	Std width (mm)	Construction	Warp	Weft	Binder	Style
34	1280	1x1	EC9 68x2 tex	EC13 136 tex	EVA	D3013S018

### Diagonal scrims

Weight (g/sqm)	Std width (mm)	Construction	Warp	Weft	Binder	Style
65,3	300/325	2x(0,6x2)	EC13 136 tex	PET 1100 dtex	PVAC	D4136S040

## SPORT FIELDS

### Fabrics

Weight (g/sqm)	Std width (mm)	Pattern	Construction	Warp	Weft	Finish	Style
54	914	Plain	7,9x3,9	EC6 34 tex	EC9 68 tex	273	1658
54	991/1270	Leno	7,9x3,9	EC6 34 tex	EC9 68 tex	271	1659

**Finish**  
271  
273

**Color**  
White  
Yellow

**Description**  
PVAC AC COPO  
PVAC AC COPO



## INNER CEILING

### Square scrims

Weight (g/sqm)	Std width (mm)	Construction	Warp	Weft	Binder	Style
54	1600	5x3	EC9 33 tex	EC9 33 tex	PVC	10GI164

# PRIMARY STRUCTURAL MATERIALS REINFORCEMENT

## MAKE YOUR DAILY LIFE SAFE

Pocher industries textile reinforcements in primary structural materials reinforcement (PSMR) is present on the national and international building and construction market in various applications for : concrete reinforcement, mortar repairing, cellular precast elements tunnels, etc...



## ADVANTAGES

- Flexural strength**
- Crack resistance**
- Anti corrosion**
- Light weight**
- Friendly environment**





## TUNNEL SUBSOIL STRUCTURE / AIR DUCT FOR MINES

### Square scrim

Weight (g/sqm)	Std width (mm)	Construction	Warp	Weft	Binder	Style
220,5	1470	2x2	PET 2890 dtex	PET 2890 dtex	PVC	10GI158

### Diagonal scrim

Weight (g/sqm)	Std width (mm)	Construction	Warp	Weft	Binder	Style
145	1470	3x(2x2)	PET 1100 dtex	PET 1100 dtex	PVC	10GT065XX

## STRUCTURE REINFORCEMENT / REPAIRING

### Fabrics/Quasi-UD

Weight (g/sqm)	Std width (mm)	Weave	Construction	Warp	Weft	Finish	Style
49	140	Plain	7,9x7,9	EC9 34 tex	EC9 34 tex	263	1620
240	300/600	UD	2,85x1,0	12K carbon T700SC 50C	Hot melt glass 85 tex	F97	15520
280	1650	Panama	12x12	PET 1100 dtex	PET 1100 dtex	/	10P1105
505	200	4H Satin	4,4x1,8	12K Carbon	12K Carbon	000	02020-09
560	300/600	Plain	3,25x1,3	24 K Carbon	Hot Melt glass 85 tex	F97	15521

### Square scrim

Weight (g/sqm)	Std width (mm)	Construction	Warp	Weft	Binder	Style
85	1470	2x2	PET 1100 dtex	PET 1100 Dtex	PVC	10GI070
155	Max 2400	0,5x0,5	CARBON 12K	CARBON 12K	PVC AR	D1400S044
155	Max 2400	0.8x0.17	CARBON 12K	CARBON 12K	PVC AR	D1401S044

## DRAINS & BASEBOARDS

### Square scrim

Weight (g/sqm)	Std width (mm)	Construction	Warp	Weft	Binder	Style
34	1470	3x3	PET 280 dtex	PET 280 dtex	PVC	10GZ014

#### Finish

000  
263  
F9709

#### Description

Greige fabric  
Acrylic weaveset  
Thermosetting

## SAFETY & SECURITY

FLAMLIN<sup>®</sup>  
designed for safety

DECORATIVE FABRICS ENGINEERED TO PROVIDE THE HIGHEST FIRE PROTECTION



Curtains



Upholstery  
interliner



Sun  
protection



Wall  
panel



Acoustical  
insulation



Interior  
design



Maritime  
sector

Flamline™ is a range of decorative non-flammable fibreglass fabrics that meet the stringent requirements of the building codes and qualify for the highest fire safety rating, A2, a classification reserved only for building materials that do not contribute fuel, smoke nor contribute to the spread of flame. The styling of the Flamline™ fibreglass fabrics with this level of fire safety forms the basis of a solution for design problems where fire safety is of paramount importance.

Flamline™ fabrics are suitable for multiple applications. They do not require polymer modifiers treatments that can generate toxic gases in fire situations. The entire range of decorative Flamline™ fabrics can be dyed or printed and is washable.

### ADVANTAGES

- Extraordinary sound absorption  
DIN 4102 (D), EN 13501-1 (EU), A2S1D0 (EU)
- Eco-friendly
- Wide range of colors
- Broad design features
- Comfortable playing surface





**A2**

Non-flammable

**s1**

No visual obstruction

**d0**

No burning droplets

## FIRE PROTECTION

### Fabrics

Weight (g/sqm)	Std width (mm)	Weave	Construction	Warp	Weft	Finish	Style
145	1500	Plain	21x9,8	EC9 34 tex	ETL6 68 tex	Not disclosed	96095
160	1500	Leno	8,6x6,3	EC6 68 tex	EGT6 140 tex	Not disclosed	96038
235	1500	S/z twill	20x14	EC6 68 tex	EC6 68 tex	Not disclosed	96031
255	1500	Leno/plain	11,85x8,5	E262 180 tex	EGT6 140 tex	Not disclosed	96045
280	1500	Plain	16,8x10	EC6 68 tex	EGT6 160 tex	Not disclosed	96082
300	1500	S/z twill	20x14	EC6 160 tex	EC6 68 tex	Not disclosed	96029
300	1500	Crepe	26x17	EC6 68 tex	EC6 68 tex	Not disclosed	96105
315	1500/3200	Broken twill	16,8x13,5	EC6 68 tex	EGT6 140 tex	Not disclosed	96110
435	1500	6 shaft satin	26x15,3	E262 180 tex	EGT6 140 tex	Not disclosed	96201

## BALLISTIC

### Fabrics

Weight (g/sqm)	Std width (mm)	Pattern	Construction	Warp	Weft	Finish	Style
62	1270	Plain	13,4x13,4	Kevlar® 49 215 tex	Kevlar® 49 215 tex	927	5120
170	1270	4HS	6,7x6,7	Kevlar® 49 1270 tex	Kevlar® 49 1270 tex	927	5285
448	965	Plain	6,7x6,7	Kevlar® 29 3333 dtex	Kevlar® 29 3333 dtex	000	5745

#### Finish

000  
927

#### Description

Greige fabric  
Washing + drying

# SOLAR PROTECTION

## THE PERFECT SUPPORT FOR SUN CONTROL

Porcher industries technological know-how and expertise allows to serve multiple solar protection solutions.

### SOLAR SCREENS FOR WINDOWS

Porcher industries offers sun shading glass fabrics for coating or coated yarns for weaving according to our customers process.

- Coated yarns for interior and outdoor screens
- Glass fabrics for roll interior blinds

### REINFORCEMENT FOR TARPAULINS, CANVAS, AWNINGS

Porcher industries proposes a large range of PET scrim as PVC reinforcement for storage areas, industrial warehouses for storage or expansion of work areas. Solutions are designed to guarantee good compatibility binder with PVC.

#### ADVANTAGES

Large range of colors  
Fire protection: M1B1  
Anti UV



## SUN SCREENS

### Coated yarns

Weight (g/1000 lm)	Description	Colors	Style
100	PVC Coated Glass yarn 34 Tex	White, Grey, Charcoal, Perle, Sand	E10300
168	PVC Coated Glass yarn 68 Tex	White, Grey, Charcoal, Perle, Sand	E10400

### Fabrics

Weight (g/sqm)	Std width (mm)	Weave	Construction	Warp	Weft	Finish	Style
148	2100	Plain	11x10	EC9 68 tex	ET6 70 tex	Desized	1303
158	1840/2450	Mock leno	21x24,2	EC6 34 tex	EC6 34 tex	Desized	1409
164	2100	Plain	14x13	EC6 51 tex	ET6 70 tex	Desized	1277
234	3400	Plain	17,2x8	EC9 68 tex	Etllex9 140 tex	Desized	7642
244	2480	Plain	22x8,5	EC6 51 tex	ET6 140 tex	Desized	11201
247	2450	Modified mock leno	14x15	EC6 68 tex	EC6 68 tex/ EC9 136 tex	Desized	5562

### Coated fabrics

Weight (g/sqm)	Std width (mm)	Weave	Construction	Warp	Weft	Finish	Style
165	2440	Modified mock leno	21x24,2	EC9 34 tex	EC9 34 tex	EVA	IG155*
165	2440	Modified mock leno	21x24,2	EC9 34 tex	EC9 34 tex	EVA Sanitized	Screen care**

\* Available in White, Black, Perle, Grey

\*M0 / A2S1D0

\*\*M1B1



## AWNINGS AND BLINDS

### Square scrims

Weight (g/sqm)	Std width (mm)	Construction	Warp	Weft	Binder	Style
57	1470	3x3	PET 550 dtex	PET 550 dtex	PVC	10GI019XX
75	1470	3,5x3,5	PET 550 dtex	PET 550 dtex	PVC	10GI093XX

### Fabrics

Weight (g/sqm)	Std width (mm)	Weave	Construction	Warp	Weft	Finish	Style
117	1422	Plain	15,7x8,7	EC9 34 tex	EC9 68 tex	000	1642
858	1524/1727	8HS	16,5x14,2	EC9 136x2 tex	EC9 136x2 tex	000	3784

## CANVAS/TARPAULINS/COVERS

### Square scrims

Weight (g/sqm)	Std width (mm)	Construction	Warp	Weft	Binder	Style
31	1470	3x3	PET 280 dtex	PET 280 dtex	PVC	10GI014XX
57	1470	3x3	PET 550 dtex	PET 550 dtex	PVC	10GZ019
61	1470	2x2	PET 930 dtex	PET 930 dtex	PVC	10GZ147
65,5	1470	1,5x1,5	PET 1100 dtex	PET 1100 dtex	PVC	10GI119XX
71,5	1470	2x2	PET 930 dtex	PET 930 dtex	PVC	10GI143
85	1470	2x2	PET 1100 dtex	PET 1100 dtex	PVC	10GI078XX*
85	1470	2x2	PET 1100 dtex	PET 1100 dtex	PVC	10GI070XX
145	1470	3,5x3,5	PET 1100 dtex	PET 1100 dtex	PVC	10GI131XX

\* Calendered

### Diagonal scrims

Weight (g/sqm)	Std width (mm)	Construction	Warp	Weft	Binder	Style
38	1470	3x3	PET 280 dtex	PET 280 dtex	PVC	10GT063XX
63	1470	3x3	PET 550 dtex	PET 550 dtex	PVC	10GT064XX
145	1470	3x(2x2)	PET 1100 dtex	PET 1100 dtex	PVC	10GT065XX

Finish	Description
000	Greige fabric

M1B1	Fire protection

# THERMAL INSULATION

## THE BEST FACING FOR COVERING INSULATION

### HVAC (HEATING, VENTILATION AND AIR CONDITIONING):

The key requirement for our black glass fabrics dedicated to HVAC duct applications is to provide maximum mechanical resistance, thereby decreasing maintenance costs whilst also delivering a good level of acoustic performance.

### MARINE

Onboard ships, glass fabrics are mainly white and manufactured to comply with the stringent International Marine Organization (IMO) standards for specific fire resistance. They are typically used for interior trim and to insulate technical areas such as ships' such engine and boiler rooms.

Additional functional properties such as fungi resistance or hydrophobic treatment can be added to the glass fabric. A hot-melt glue coating allows end users to apply the fabric directly to the selected thermal insulation material with heat and pressure.

## HVAC

### Fabrics

Weight (g/sqm)	Std width (mm)	Weave	Construction	Warp	Weft	Finish	Style
97	1025	Plain	16x12,5	EC9 34 tex	EC9 34 tex	000	1674/4716
104	2040	Plain	11,8x8,5	EC9 34 tex	EC9 68 tex	102	3668/4836
111	1205	Plain	11,8x3,6	EC 9 68 tex	EC 9 68 tex	094	3449/4932
112	1050	Plain	23,7x22,8	EC5 11x2 tex	EC5 11x2 tex	Fi214	91106/116
121	1680	Plain	11,8x11,5	EC9 34 tex	EC9 68 tex	000	3228/3882
126	1200	Plain	11,8x11,5	EC9 34 tex	EC9 68 tex	650	3228/3882
126	1150	Plain	11,8x11,5	EC9 34 tex	EC9 68 tex	248	3228/3882
144	1000	Plain	12x13,5	EC9 34 tex	EC9 68 tex	Fi114	5553
160	1200	Plain	11,8x10	EC9 68 tex	EC9 68 tex	162	3907
435	1250	4 shaft satin	18,6x11	EC9 136 tex	EC9 136 tex	Fi214	440

## NAVY

### Fabrics

Weight (g/sqm)	Std width (mm)	Weave	Construction	Warp	Weft	Finish	Style
126	1250	Plain	11,8x11,5	EC9 34 tex	EC9 68 tex	094	3228
214	1250	Plain	17,4x11,8	EC9 68 tex	EC9 68 tex	174	7628
502	1000	Satin	19,2x11,1	EC9 136 tex	EC9 136 tex	624	969

## PAPER AND ALUMINIUM INSULATION REINFORCEMENT

### Square scrim

Weight (g/sqm)	Std width (mm)	Construction	Warp	Weft	Binder	Style
3,3	1440	0,8x0,8	MOD 140 dtex	MOD 140 dtex	PVOH	M4284S002
3,6	1740	0,8x0,8	PET 76 x 2 dtex	PET 140 dtex	PVAC	D3934S039
6,5	1220	0,8x0,8	EC9 34 tex	EC9 34 tex	PVOH	M1236S002*
6,9	1500	0,8x0,8	PET 167x2 dtex	PET280 dtex	PVAC	D3473S039
7,8	1520	1x1	EC9 33 tex	EC9 33 tex	PVOH	10GI12401
9,6	1200	1,6x0,8	EC9 34 tex	EC9 34 tex	PVOH	M3675S002
11,8	1230	2x1	EC9 34 tex	EC9 34 tex	PVOH	M3250S002
15,5	1520	1x1	EC9 68 tex	EC9 68 tex	PVOH	10GI133XX
15,6	1220	2x2	EC9 34 tex	EC9 34 tex	PVOH	M1215S002
15,7	1500	2x2	EC9 33 tex	EC9 33 tex	PVOH	10GI018XX
30,5	940	2x2	EC9 68 tex	EC9 68 tex	PVOH	10GI109XX

\*Also available in EVA

### Diagonal scrim

Weight (g/sqm)	Std width (mm)	Construction	Warp	Weft	Binder	Style
3	1240	0,8x(0,4x2)	PET 167 dtex	PET 140 dtex	PVOH	D3966S002
8,4	1210	0,8x(0,6x2)	EC9 34 tex	EC9 34 tex	PVOH	D3553S002
31,5	1240	2x(1x2)	EC9 68 tex	EC9 68 tex	PVOH	D3846S002

## WALL PANELS

### Square scrim

Weight (g/sqm)	Std width (mm)	Construction	Warp	Weft	Binder	Style
45	595	1,6X1	EC9 68 x 2 Tex	EC9 136 Tex	SBR	D4351S059

#### Finish

000  
067  
094  
102/162  
174  
248  
624  
650  
Fi114  
Fi214

#### Color

-  
White  
Black  
Black  
White  
Black  
/  
Black  
Black  
White

#### Description

Greige fabric  
EVA weavelock  
EVA weavelock  
EVA weavelock, Antifungal  
Copolymer with chloride weavelock, fire retardant  
EVA weavelock, fire retardant + Hot Melt Polyester IGN (30 g/m<sup>2</sup>)  
Aluminium foil  
EVA weavelock, + Hot Melt PE (20 g/m<sup>2</sup>)  
EVA weavelock  
EVA weavelock

# WATERPROOFING MEMBRANES

## TEXTILE EXPERTISE ELIMINATES LEAKS

Porcher Industries' solutions are used to reinforce waterproofing membranes for swimming pool liners and flat roofs. PET or glass scrims significantly improve the tear strength, puncture resistance and dimensional stability of the membranes.

Porcher Industries' scrims can be used on their own or in conjunction with a glass veil or nonwoven mat to insure optimum resistance to long term exposure to extreme weather conditions without damage.

Scrims bond perfectly to all polymer membranes made of PVC, polyolefin, rubber or asphalt.

### Advantages:

**Tear strength & puncture resistance**  
**Polymer compatibility**  
**Flexibility**

## PIBAT+ /PIBAT+ TPO : OUR COMPETENCE FOR FIRE RESISTANCE

PIBAT+ are glass fabrics heat welding on top of PVC and TPO waterproofing membranes engineered to provide the highest fire protection, classified A2S1D0.

## ROOFING

### PVC - Square scrims

Weight (g/sqm)	Std width (mm)	Construction	Warp	Weft	Binder	Style
21,7	2160	2x2	PET 550 dtex	PET 280 dtex	EVA	D4243C018
27,6	2170	2x2	EC 9 34 tex	EC 9 34 tex	PVC	D1215S027
52	2075	2x2	EC 9 68 tex	EC 9 68 tex	PVC	D3018S027
52	1700	2,8x2,8	PET 1100 dtex	PET 1100 dtex	PVC	D4264S072
64,2	1000	3x3	PET 550 dtex	PET 550 dtex	PVC	D3600S072
110	2100/1570	2,5x2,5	PET 1100 dtex	PET 1100 dtex	PVC	D3603S072
127,5	2100	3x3	PET 1100 dtex	PET 1100 dtex	PVC	D3366S072*

\* Also available in EVA

### PVC - Fabrics

Weight (g/sqm)	Std width (mm)	Weave	Construction	Warp	Weft	Finish	Style
54	991/1270	Leno	7,9x3,9	EC6 34 tex	EC9 68 tex	271	1659
439	1050	4HS	19,2x9,6	EC9 136 tex	EC9 136 tex	609	3772 PIBAT+

### TPO - Square scrims

Weight (g/sqm)	Std width (mm)	Construction	Warp	Weft	Laminated with	Binder	Style
58,6	1995	2x2	PET 1100 dtex	PET 1100 dtex		EVA	D3258S161
113	2060	2x2	PET 1100 dtex	PET 1100 dtex	GV 35 grs	PVOH + PVAC	D4093S028



## ROOFING

### TPO - Fabrics

Weight (g/sqm)	Std width (mm)	Pattern	Construction	Warp	Weft	Binder	Style
440	1050	4HS	19,2x9,7	EC9 136 tex	EC9 136 tex	E4R	3772 PIBAT+ TPO

### EPDM- Square scrim

Weight (g/sqm)	Std width (mm)	Construction	Warp	Weft	Binder	Style
27,4	1500	3x2	PET 280 dtex	PET 550 dtex	SBR + COPO AC	D4154S059
65,4	1720	4x4	EC9 68 tex	EC9 68 tex	EVA	D3025S018

### EPDM - Reduced thickness square scrim

Weight (g/sqm)	Std width (mm)	Construction	Warp	Weft	Binder	Style
43,2	1700	3x3	PET 550 dtex	PET 550 dtex	EVA	D3600C018

### Bitumen - Square scrim

Weight (g/sqm)	Std width (mm)	Construction	Warp	Weft	Laminated with	Style
9,6	3335	1,6x0,8	EC9 34 tex	EC9 34 tex	PVOH	D3675S002

## SWIMMING POOL

### Square scrim

Weight (g/sqm)	Std width (mm)	Construction	Warp	Weft	Binder	Style
63	1470	3x(1,5x2)	PET 550 dtex	PET 550 dtex	PVC	10GT064XX
65,5	1470	1,5x1,5	PET 1100 dtex	PET 1100 dtex	PVC	10GI119XX
85	1470	2x2	PET 1100 dtex	PET 1100 dtex	PVC	10GI078XX*
85	1470	2x2	PET 1100 dtex	PET 1100 dtex	PVC	10GI070XX

\* Calendered

#### Finish

271  
609  
E4R

#### Color

White  
Grey  
Blue

#### Description

PVAC AC COPO  
PU  
PU/PP

# INDEX

## Fabrics

Style	Page
119	7
440	18
965	9
969	19
1277	16
1303	16
1409	16
1620	13
1642	17
1658	11
1659	11/20
1674/4716	18
1675	7
1963	7
2116	9
3228	19
3228/3882	18
3449/4932	18
3494	7
3668/4836	18
3675	9
3675	9
3698	9
3772 PIBAT+	20
3772 PIBAT+ TPO	21
3784	17
3907	18
4651	7
5120	15
5285	15
5553	18
5562	16
5745	15
7624	7
7628	7
7628	19
7642	16
7660	7
7781	7
11201	16
13530	7
14764	9
15520	13
15521	13
91106/116	18
96029	15
96031	15
96038	15
96045	15
96082	15
96095	15
96105	15

96110	15
96201	15
02020-09	13
10P1105	13
IG155	16
Screen Care	16

## Scrims

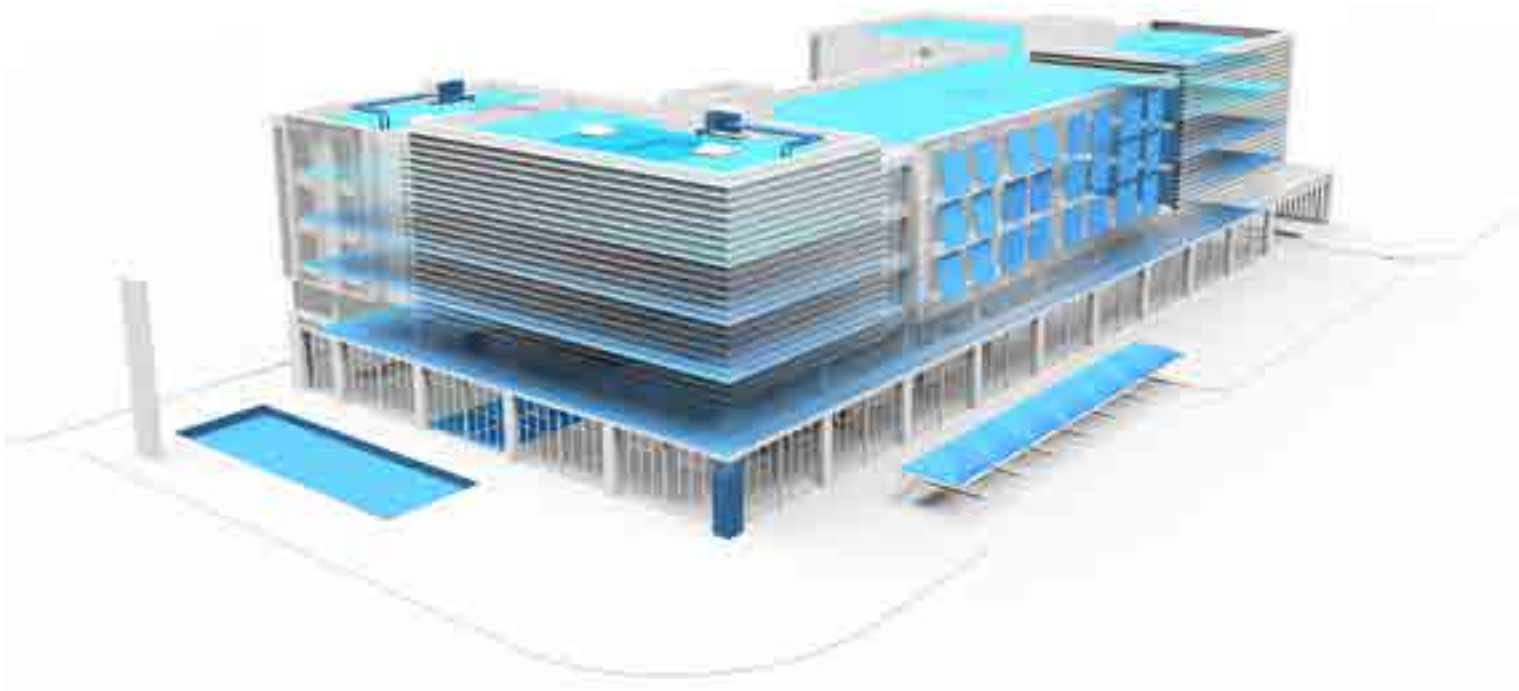
Style	Page
106I158	13
10GI014XX	17
10GI018	10
10GI018XX	19
10GI019XX	17
10GI070	13
10GI070XX	17/21
10GI078XX	17/21
10GI093XX	17
10GI109XX	19
10GI119XX	17/21
10GI12401	19
10GI131XX	17
10GI133XX	19
10GI143	17
10GI164	11
10GT063XX	17
10GT064XX	17/21
10GT065XX	13
10GT065XX	17
10GZ014	21
10GZ019	17
10GZ147	17
D1215S027	20
D1400S044	13
D1401S044	13
D3008S027	10
D3013S018	11
D3018S027	20
D3025S018	21
D3258S161	20
D3280S018	10
D3280S068	10
D3312S027	10
D3366S072	20
D3394C061	10
D3473S039	19
D3553S002	19
D3600C018	21
D3600S072	20
D3603S072	20

D3675S002	21
D3703S018	7
D3703S018	9
D3742S018	7
D3742S018	9
D3846S002	19
D3934S039	19
D3942S010	7
D3942S010	9
D3945S072	7
D3945S072	9
D3949C018	7
D3949C018	9
D3966S002	19
D4080C047	10
D4084S027	10
D4093S028	20
D4102S002	7
D4102S002	9
D4124S018	7
D4124S018	9
D4136S040	11
D4137C061	10
D4138S010	9
D4138S010	7
D4151C058	7
D4151C058	9
D4152C018	7
D4152C018	9
D4154S059	21
D4157C018	10
D4227S002	7
D4227S002	9
D4243C018	20
D4264S072	20
D4334S027	10
D4340S036	7
D4340S036	9
D4351S059	19
M1204SF5H	11
M1215S002	11
M1215S002	19
M1236S002	19
M3250S002	19
M3675S002	19
M3943C018	7
M3943C018	9
M4107SF15	11
M4284S002	19
M4330S059	11
10GI070XX	21
10GZ014	21

# Yarn

Style	Page
E10300	16
E10400	16

## OUR APPLICATIONS



The list of products is not exhaustive.

It is intended to provide informations about the most standard products.

The information contained in this brochure is based on the present state of our knowledge. Values quoted are average values and are given for guidance purposes only. Any conclusions and recommendations are made without liability on our part. Buyers and users should make their own assessment of our products under their own conditions and requirements.

This brochure belongs exclusively to porcher industries.

The reproduction is strictly forbidden.

Copyright : communication department of Porcher industries - shutterstock



## EUROPE

### FRANCE

2440 RD 1085  
38300 Eclose-Badinières

#### Phone

+33 (0) 4 74 43 10 10

### GERMANY

Benzstraße 14  
89155 Erbach

#### Phone

+49 7305 9550

### UNITED KINGDOM

Green vale Mill, Summit  
OL15 9QP Littleborough

#### Phone

+44 1706 371 137

## ASIA

### CHINA

No.99 West Zhongshan Road  
314201 Zhejiang

#### Phone

+85 29 3878422

### JAPAN

1 Chome-8-1 Takanodaihigashi,  
Sugito-machi, Kitakatsushika-gun,  
Saitama-ken 345-0047  
345-0047 Saitama

#### Phone

+81 480 53 8424

## AMERICAS

### USA - BGF

230 Slayton Ave Suite A1  
VA 24540 Danville

#### Phone

+1 (434) 857 4400

### BRAZIL

Av. Caetano Ruggieri  
4153 Itu, Sao Paulo

#### Phone

+55 11 4023 1966

## HEADQUARTER

### FRANCE

Porcher industries  
2440 RD 1085  
38300 Eclose-Badinières

#### Phone

+ 33 (0)4 74 43 10 10